

"Man shapes himself through decisions that shape his environment."

Rene Dubos



WISCONSIN
UNIVERSITY OF WISCONSIN-MADISON

CAMPUS MASTER PLAN UPDATE ALTERNATIVES

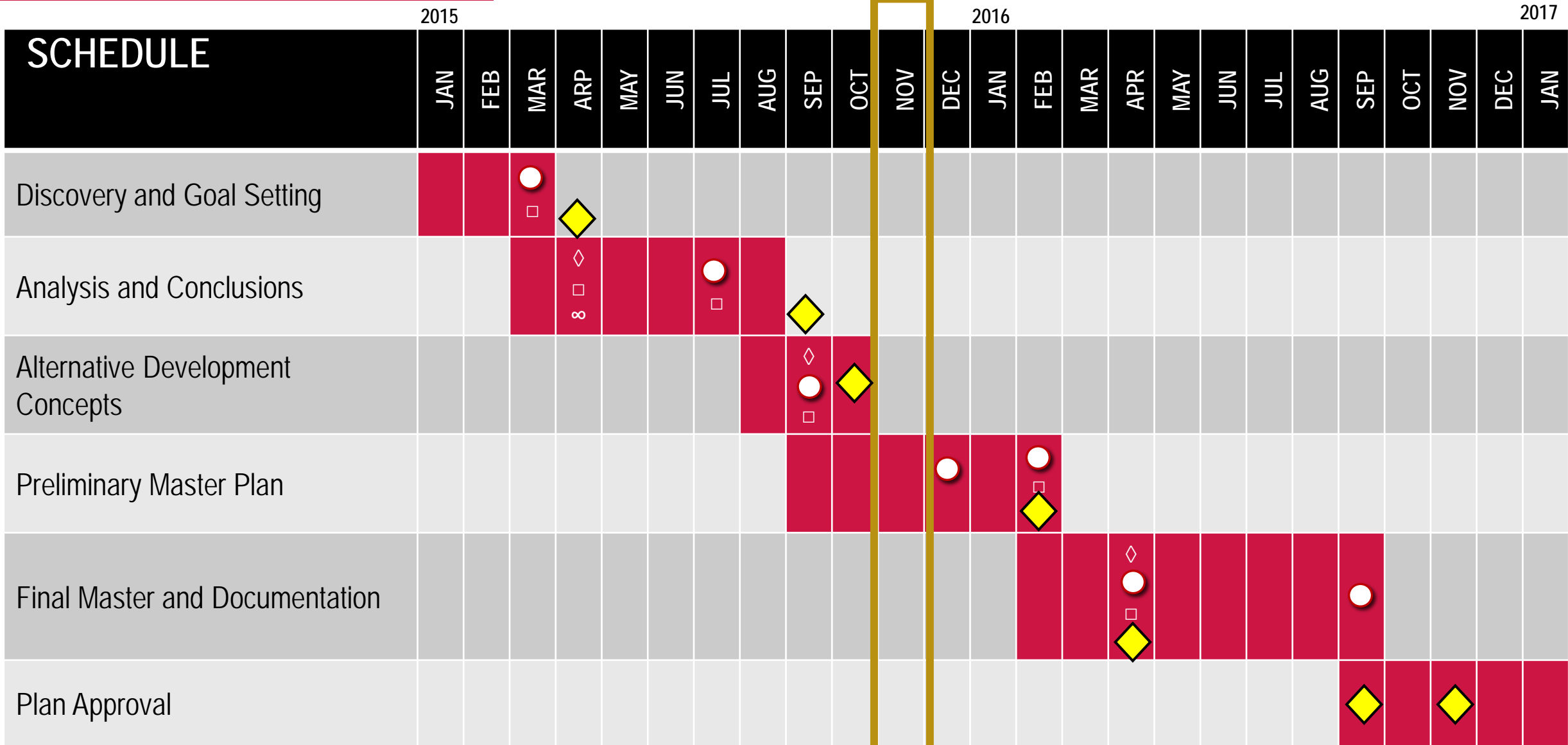
Fall 2015 Facility Manager Meeting
November 3, 2015

AGENDA

1. Alternatives Overview and Discussion

- Central Campus
- South Campus
- Near West Campus
- West Campus

2. Next Steps



45%

◆ Executive Leadership Team ● Campus Planning Committee □ Technical Coordinating Committee ◆ Campus Public Outreach



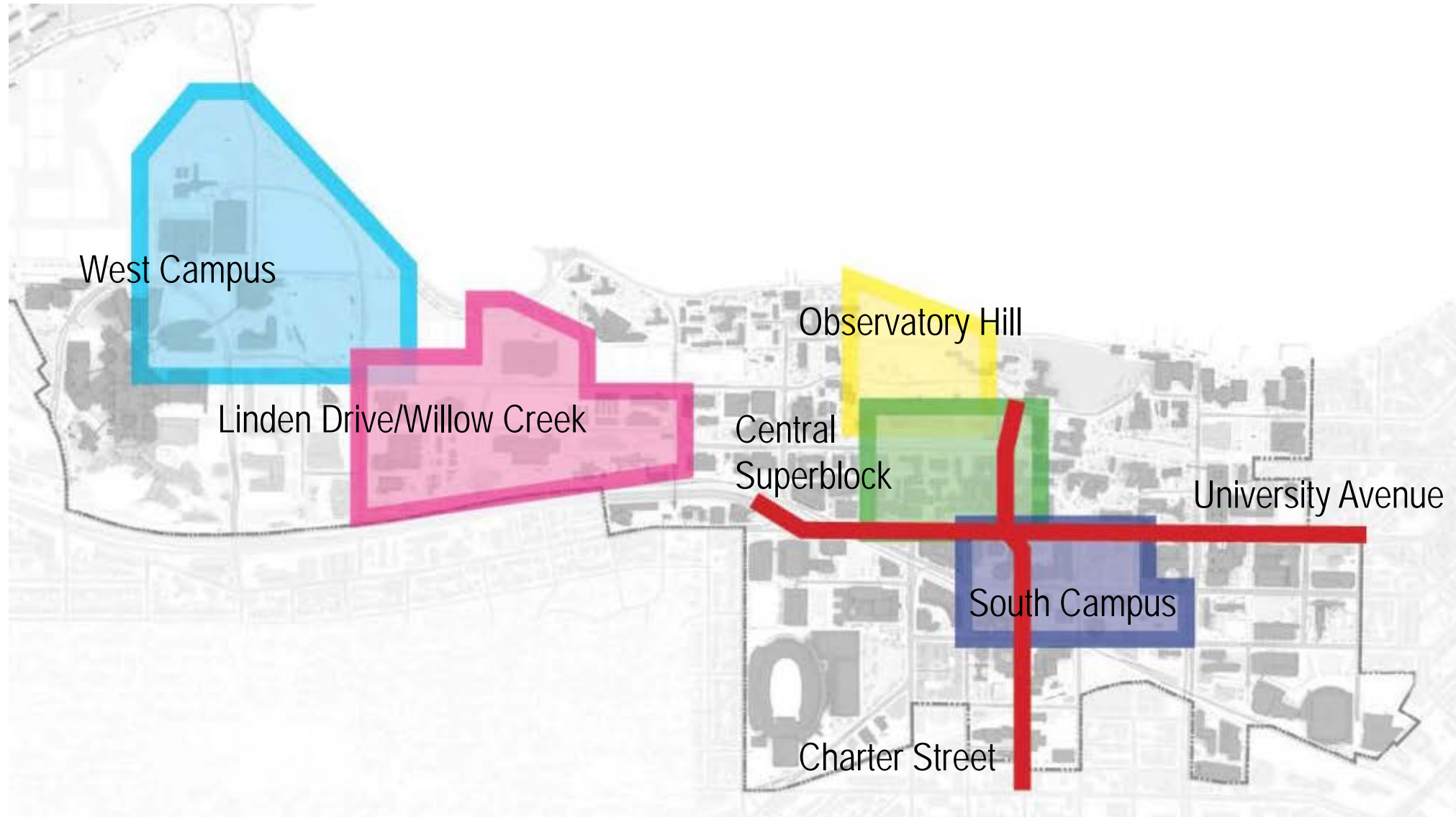
2015 MASTER PLAN GOALS

- Support our Mission
- Manage our Resources
- Make Travel Easy
- Celebrate our Lakeside Setting
- Revitalize our Outdoor Spaces
- Be Good Neighbors



1. ALTERNATIVES REVIEW

STUDY AREAS OVERVIEW

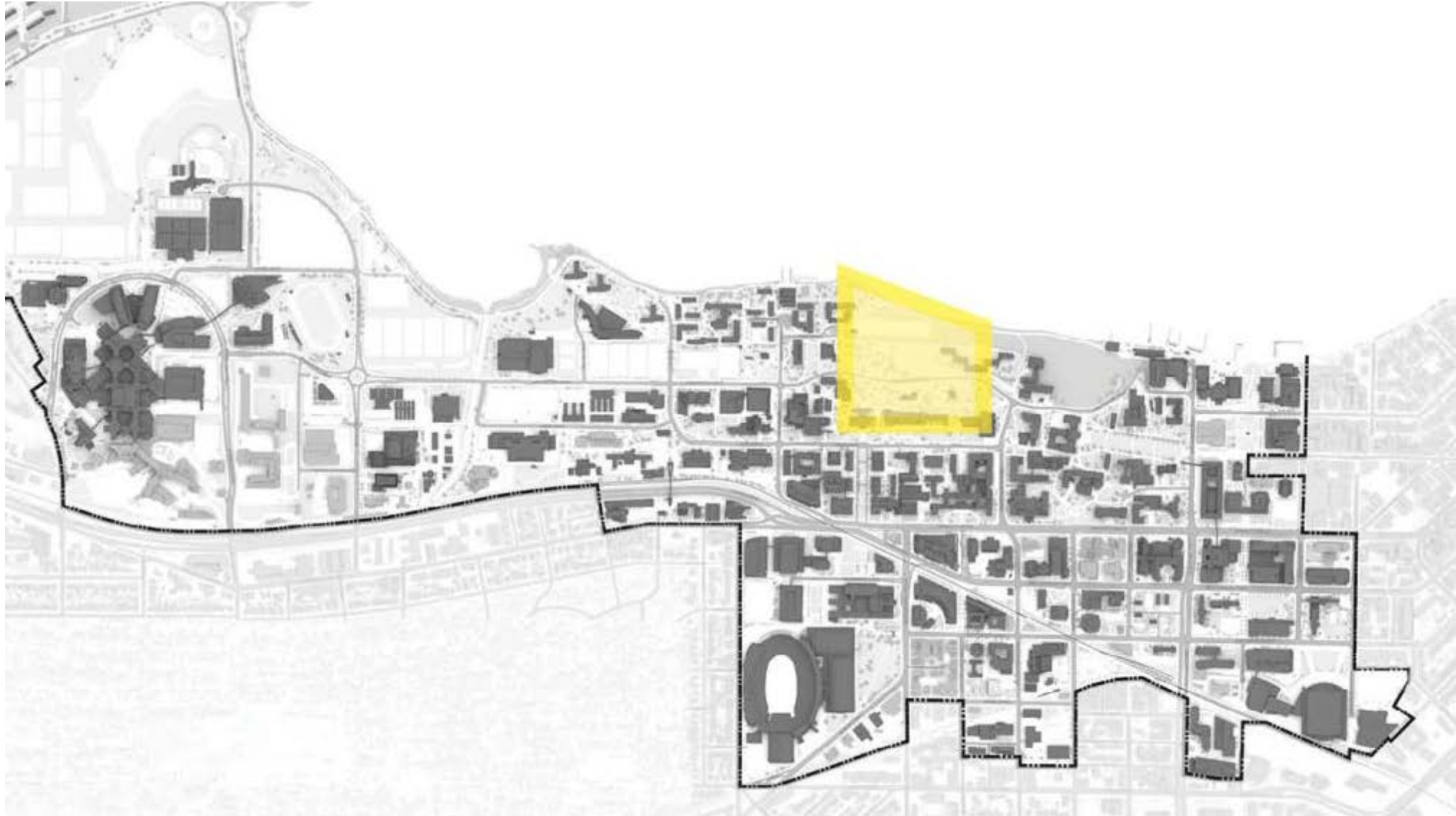




OBSERVATORY HILL



OBSERVATORY HILL





Concept 1: Prairie and Wetland

- Creates large demonstration wetland & stormwater feature at the bottom of the hill; expands on existing bioswale
- Maintains some lawn space near Liz Waters for passive recreation; Oak Savannah on the wester side of the hill



Concept 2: Restore the Hill

- Closes Observatory Drive to east-west traffic; Open to emergency vehicles and pedestrians only
- Larger lawn space on eastern half of the hill
- Smaller stormwater facilities throughout

OBSERVATORY HILL - CONCEPT 1: PRAIRIE AND WETLAND

Benchmarking: Wetland Features



New York Botanical Garden, Bronx, Oehme Van Sweden



OBSERVATORY HILL - CONCEPT 1: PRAIRIE AND WETLAND

Benchmarking: Observation Deck / Boardwalk



Parque del Humedal, Minghu, China, Turenscape



Martin Luther King Park, Paris, Jacqueline Osty Studio

OBSERVATORY HILL - CONCEPT 1: PRAIRIE AND WETLAND

Benchmarking: Prairie / Meadow



Meadow and crushed stone pathway



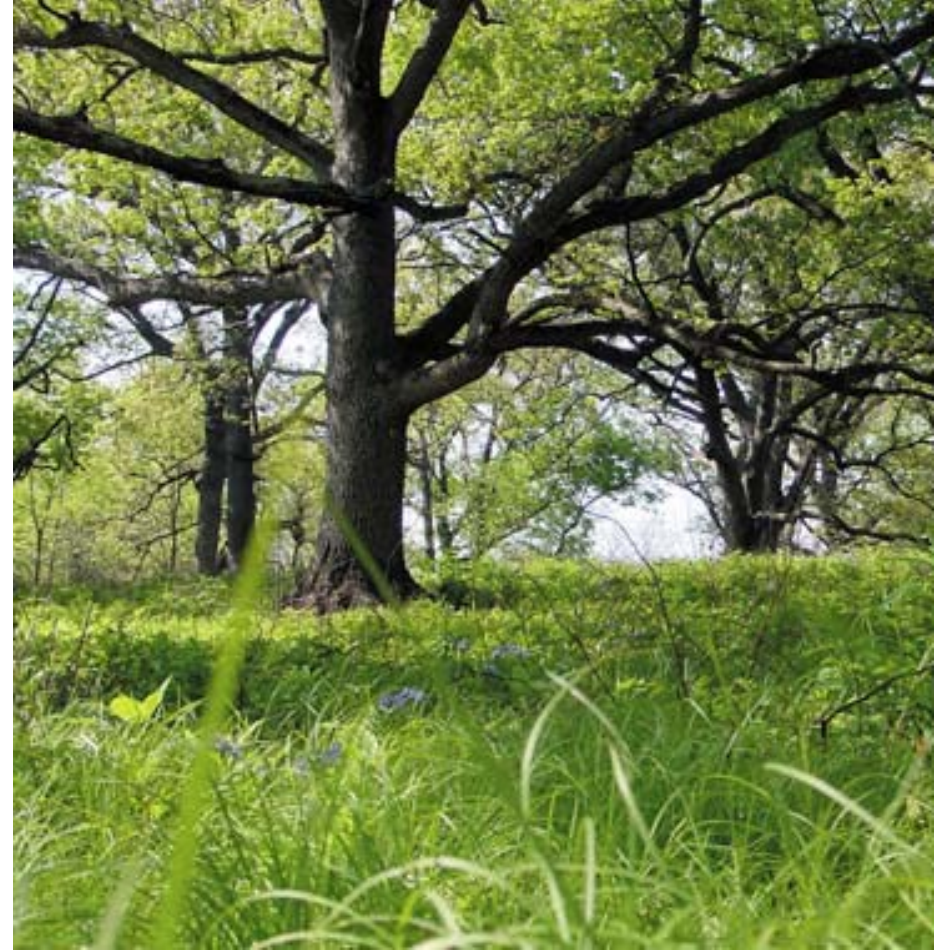
Defined meadow edge

OBSERVATORY HILL - CONCEPT 2: RESTORE THE HILL

Benchmarking: Oak Savanna



Kalscheur Savanna, Hollandale, Wisconsin



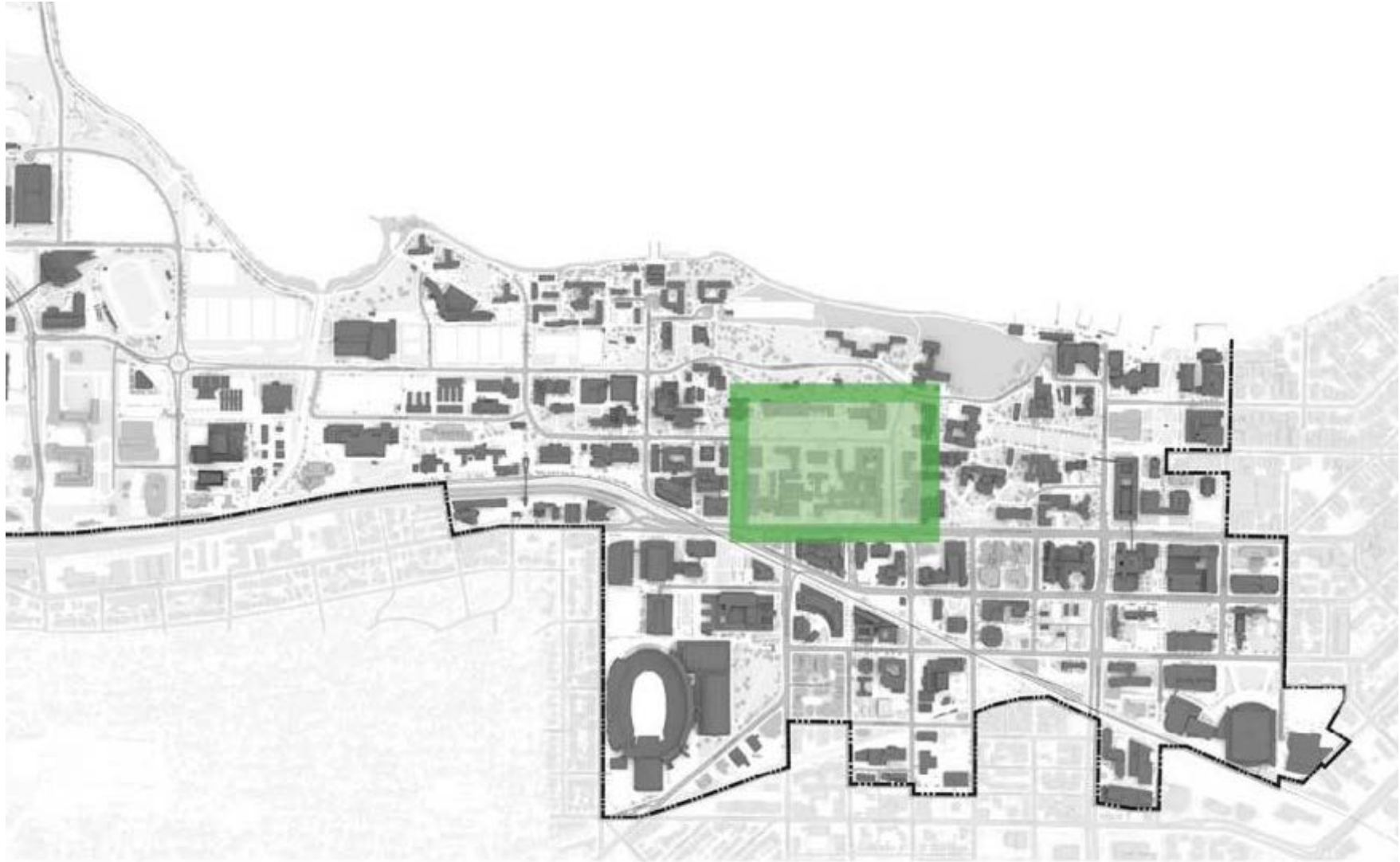
Oak Savanna, Iowa



CENTRAL SUPERBLOCK



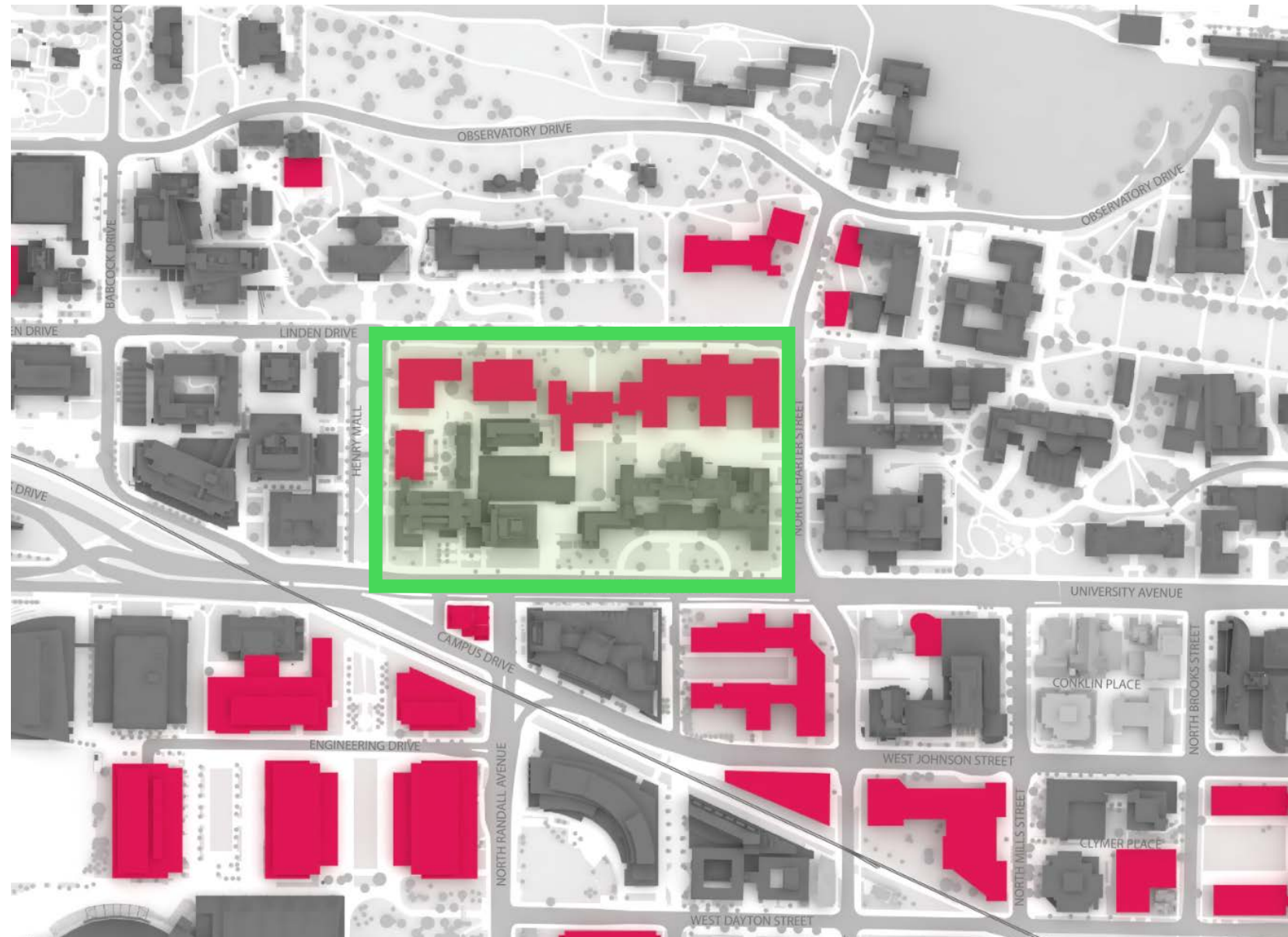
CENTRAL SUPERBLOCK



CENTRAL SUPERBLOCK

Drivers and Opportunities

- 2005 Campus Master Plan
- Planned redevelopment on most of block



CENTRAL SUPERBLOCK - CONCEPT 2: INTERIOR QUAD

- Open space consolidated within eastern block
- Greater Mall south edge defined by building facade
- Transit/pedestrian connections Linden to Charter through the block
- Expanded parking structures and under building parking replaces Lot 34 & Observatory Dr.



CENTRAL SUPERBLOCK



Concept 1: Linden Quad

- Open space consolidated within Linden Greater Mall
- Transit/ped connection University to Linden, Linden to Charter
- Parking structures provides relocated parking



Concept 2: Interior Quad

- Open space consolidated within eastern block
- Greater Mall south edge defined by facade wall
- Transit/ped connection Linden to Charter
- Underground parking provides relocated parking



Concept 3: Courtyards

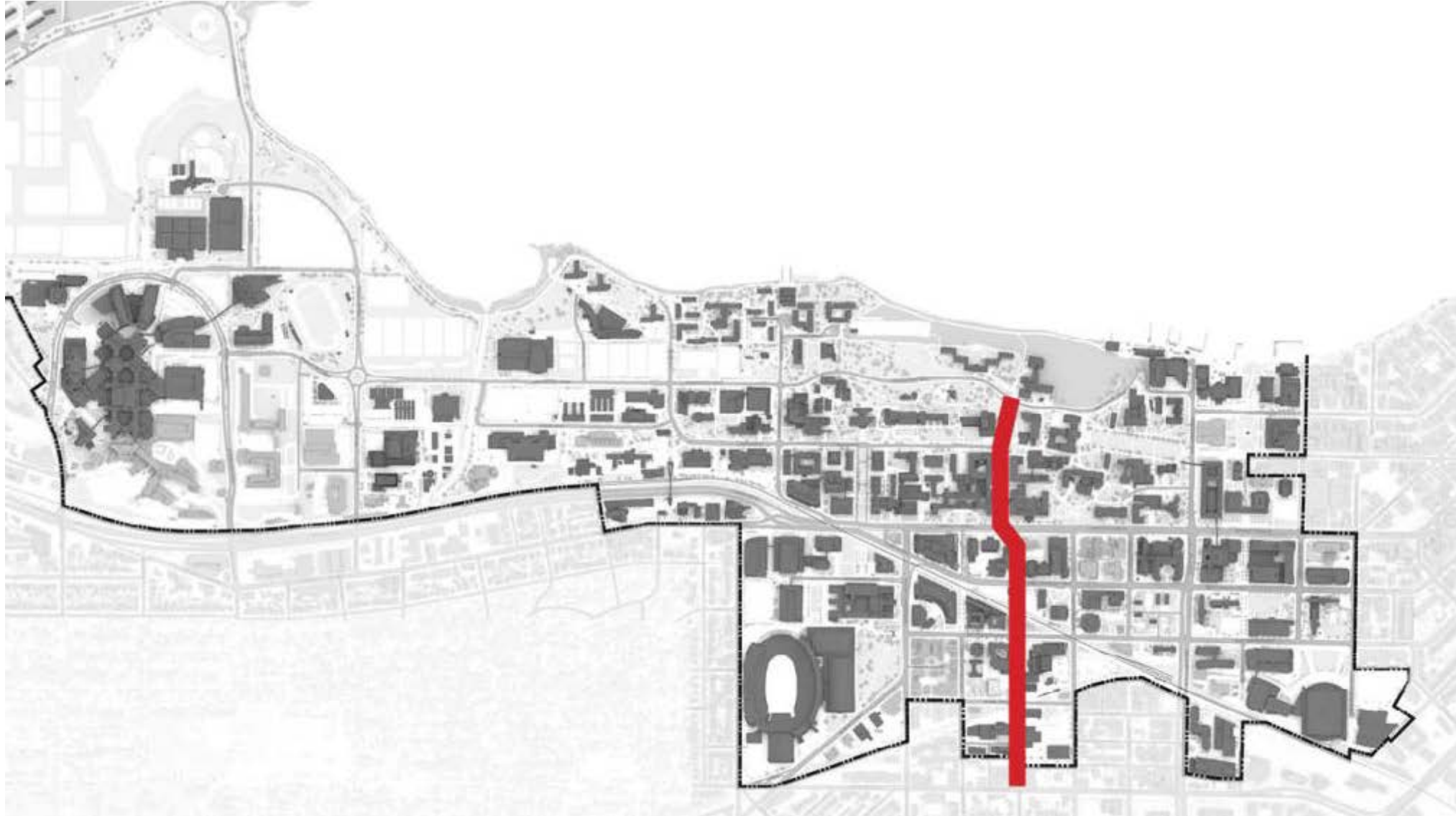
- Linden open space in smaller intimate courtyards
- Transit/ped connection University to Linden, Linden to Charter
- Parking structures provides relocated parking



NORTH CHARTER STREET



N. CHARTER STREET



N. CHARTER STREET

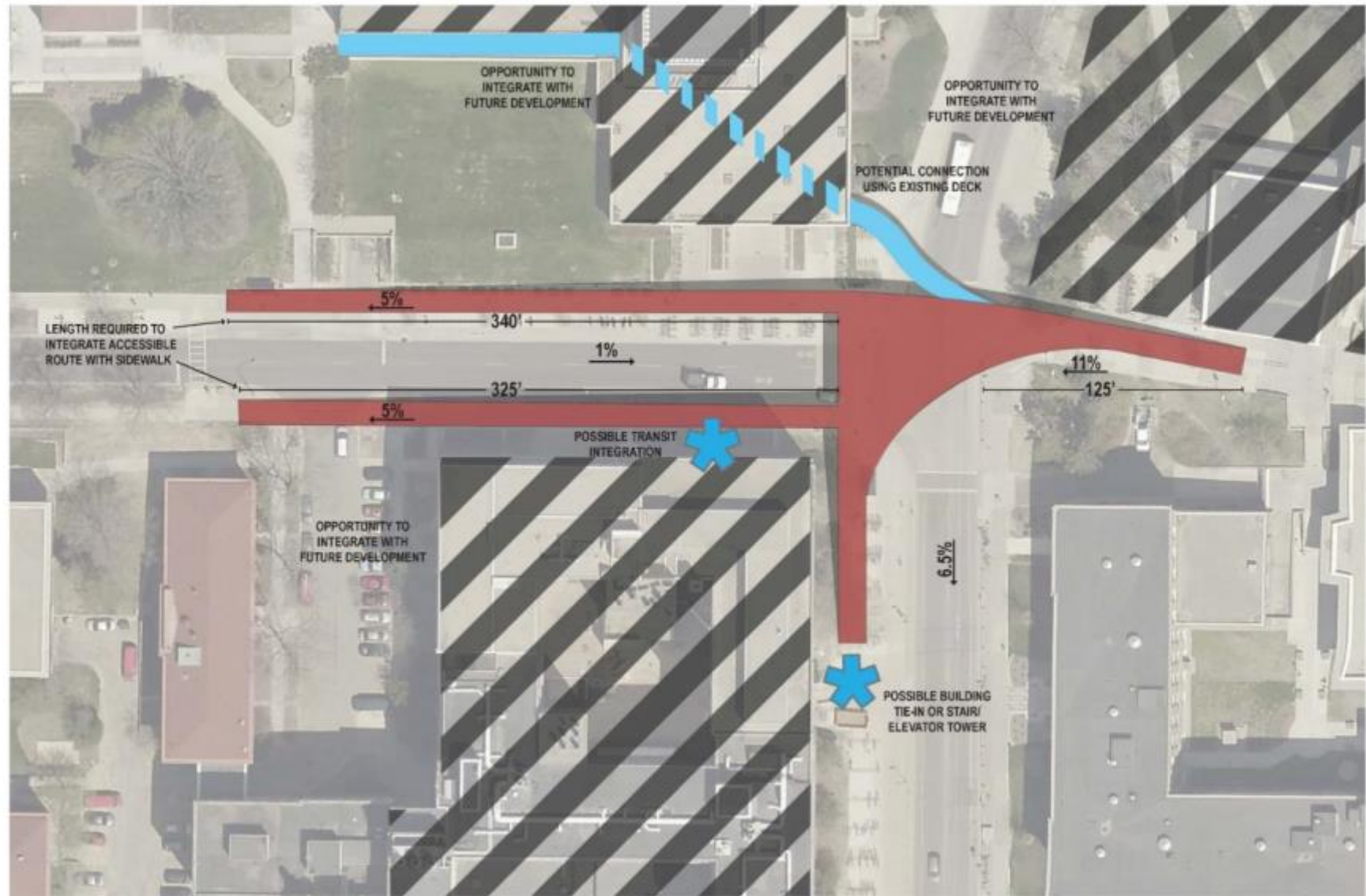
Drivers and Opportunities

- Only street west of N. Park St. to connect Regent Street to Lake Mendota
- Problem intersection at Charter & Linden Dr.: 2,200 peds and 95 bikes in peak 15-minute class change period
- Planned future redevelopment on every block from Lake Mendota to Regent Street

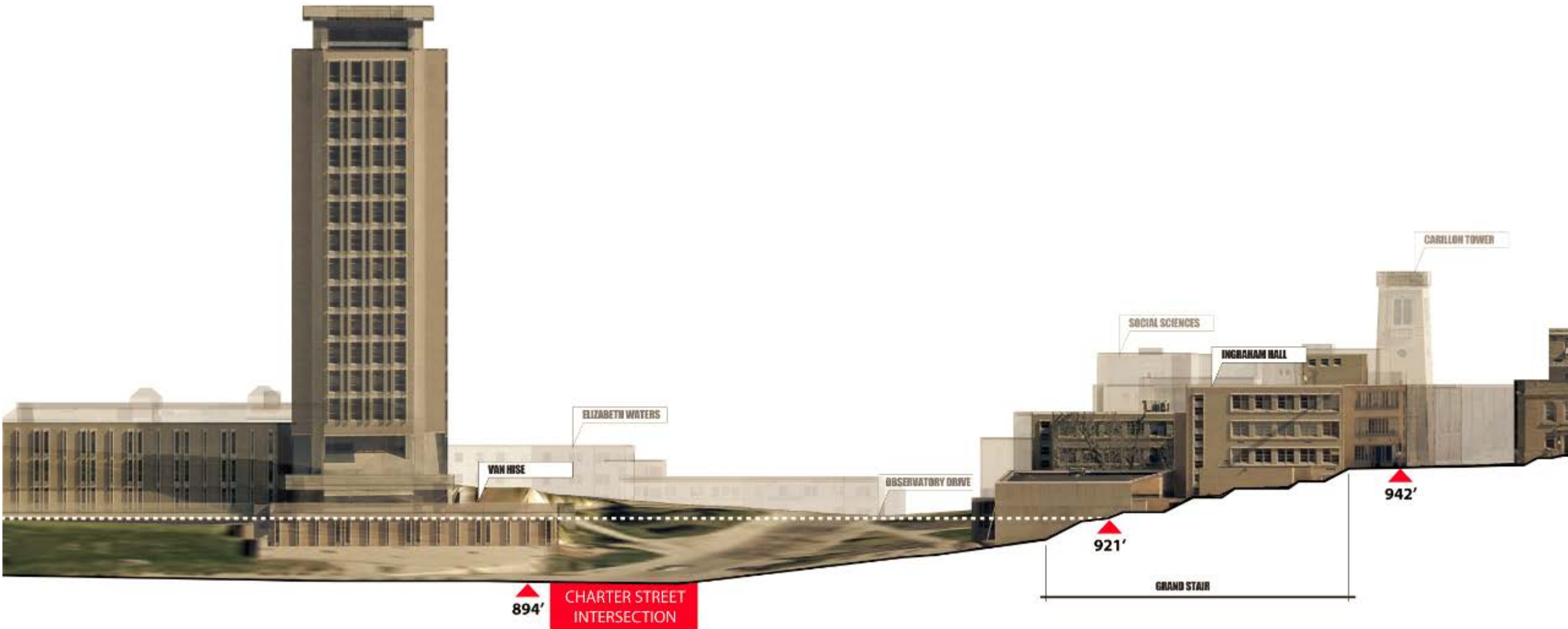


N. CHARTER/LINDEN GRADE SEPARATION

- Pedestrian-only bridge
- Opportunity to integrate the crossing with future redevelopment in the area



N. CHARTER/LINDEN GRADE SEPARATION



CHARTER/LINDEN GRADE SEPARATION

- North Charter Street looking south to University Avenue



CHARTER/LINDEN GRADE SEPARATION

- North Charter Street looking south with a bridge option





SOUTH CAMPUS



SOUTH CAMPUS



SOUTH CAMPUS

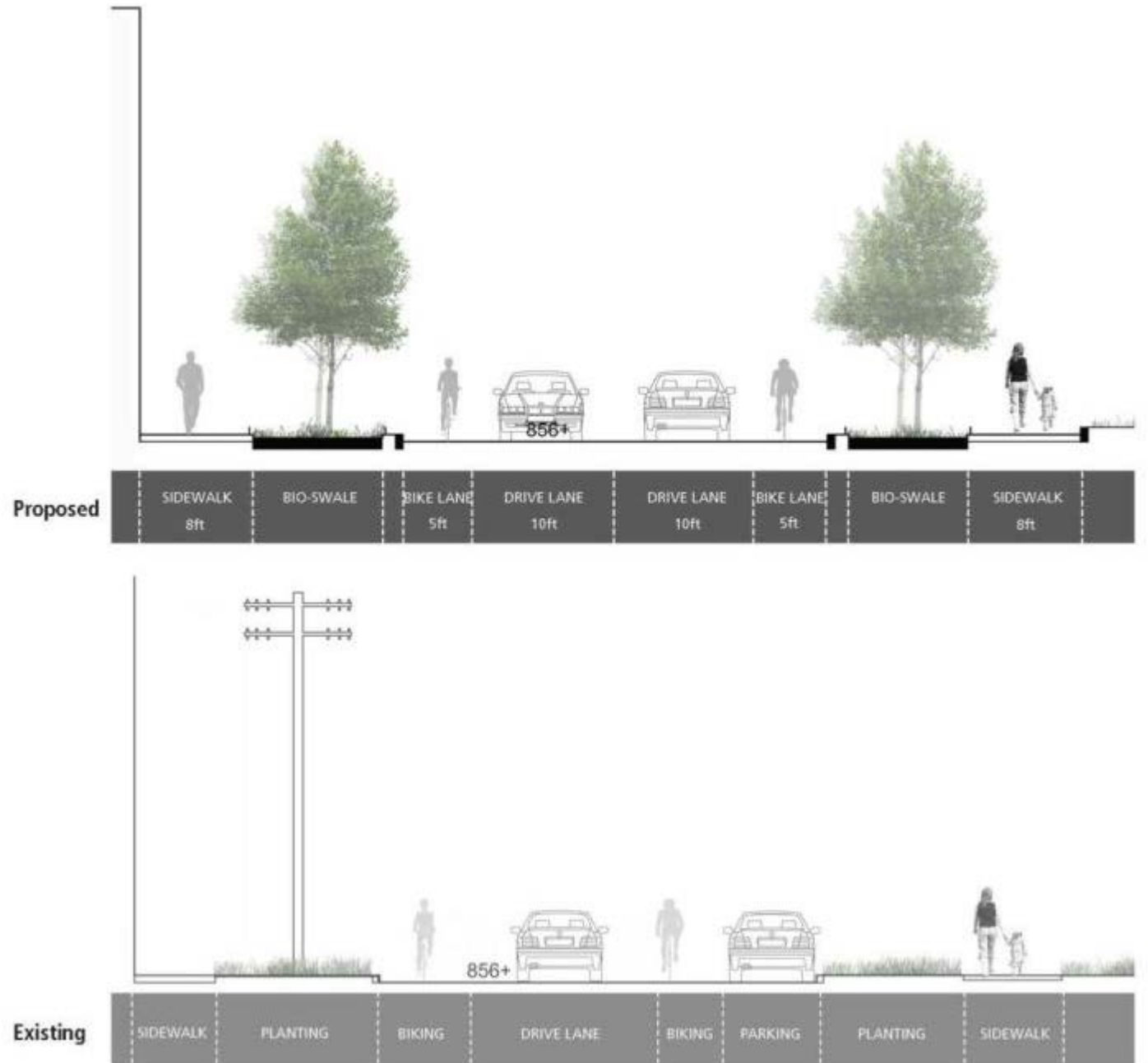
Creating an Urban Campus Identity

- West Dayton Street and North Charter Street as 'Green Streets'
- Activate West Dayton Street – both Gateway and Terminus to Camp Randall & the Kohl Center
- Options for a new South Campus Commons greenspace
- Greater Pedestrian Connectivity to Central Campus north of University Avenue



CHARTER STREET AS GREEN STREET

- Use terraces for bioswales
- Convert all of North Charter St. to two-way traffic



SOUTH CAMPUS - CONCEPT 2: CENTRAL QUAD ON DAYTON



- Create south-facing quad along West Dayton Street
- Convert Brooks and Mills to pedestrian malls between Dayton and Johnson
- Brooks and Mills as 'managed streets' from University to Johnson



SOUTH CAMPUS - CONCEPT 1: BLOCKS AND COURTYARDS



SOUTH CAMPUS - CONCEPT 2: BROOKS AND MILLS AS MANAGED STREETS / “WOONERF”



SOUTH CAMPUS



Concept 1: Blocks and Courtyards

- Current master plan concept
- Dayton and Charter as 'green streets'
- Triangle block south of Chemistry as open space



Concept 2: Central Quad on Dayton

- Create south-facing quad along Dayton
- Convert Brooks and Mills to pedestrian malls between Dayton and Johnson
- Brooks and Mills as 'managed streets' from University to Johnson



Concept 3: Urban Plaza on Johnson

- Create north-facing quad on Johnson
- Brooks and Mills as 'managed streets' from University to Dayton
- Brooks St as pedestrian mall from Johnson to Dayton



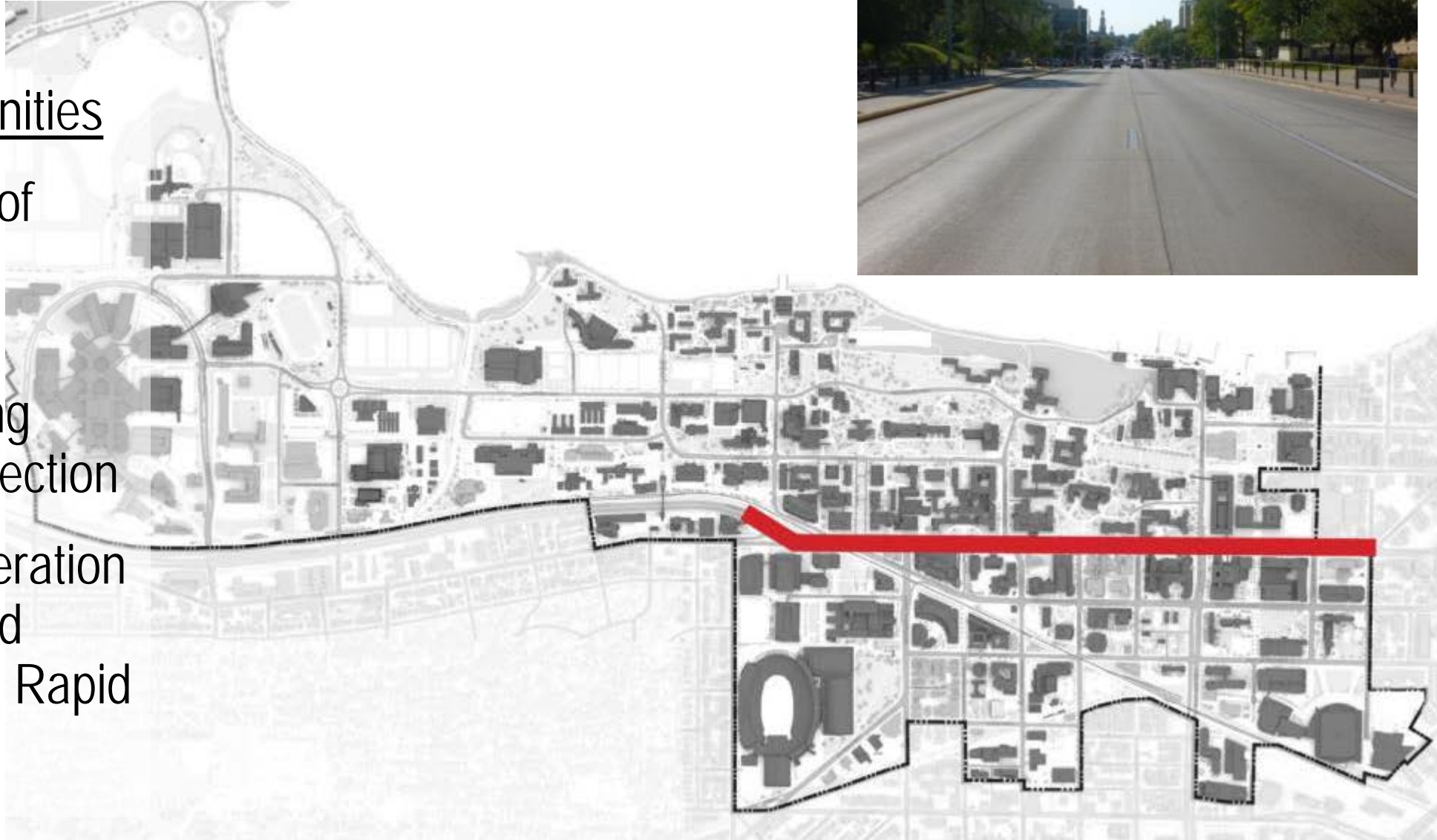
UNIVERSITY AVENUE



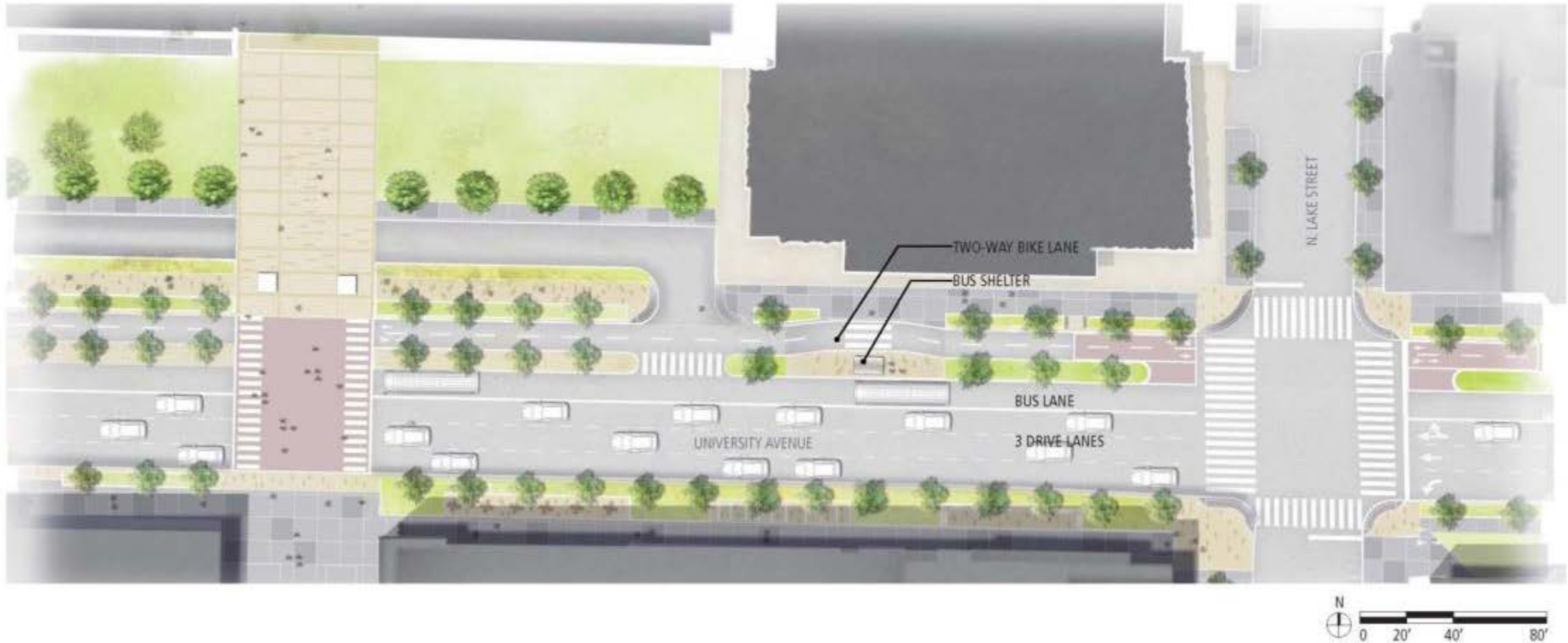
UNIVERSITY AVENUE

Drivers and Opportunities

- Improve aesthetic of prominent campus gateway
- Encourage bicycling through better protection
- Improve transit operation and prepare for and accommodate Bus Rapid Transit



UNIVERSITY AVENUE - CONCEPT 1: NORTHSIDE CYCLE TRACK



UNIVERSITY AVENUE - CONCEPT 2: SOUTHSIDE CYCLE TRACK



UNIVERSITY AVENUE - CONCEPT 2: SOUTHSIDE CYCLE TRACK



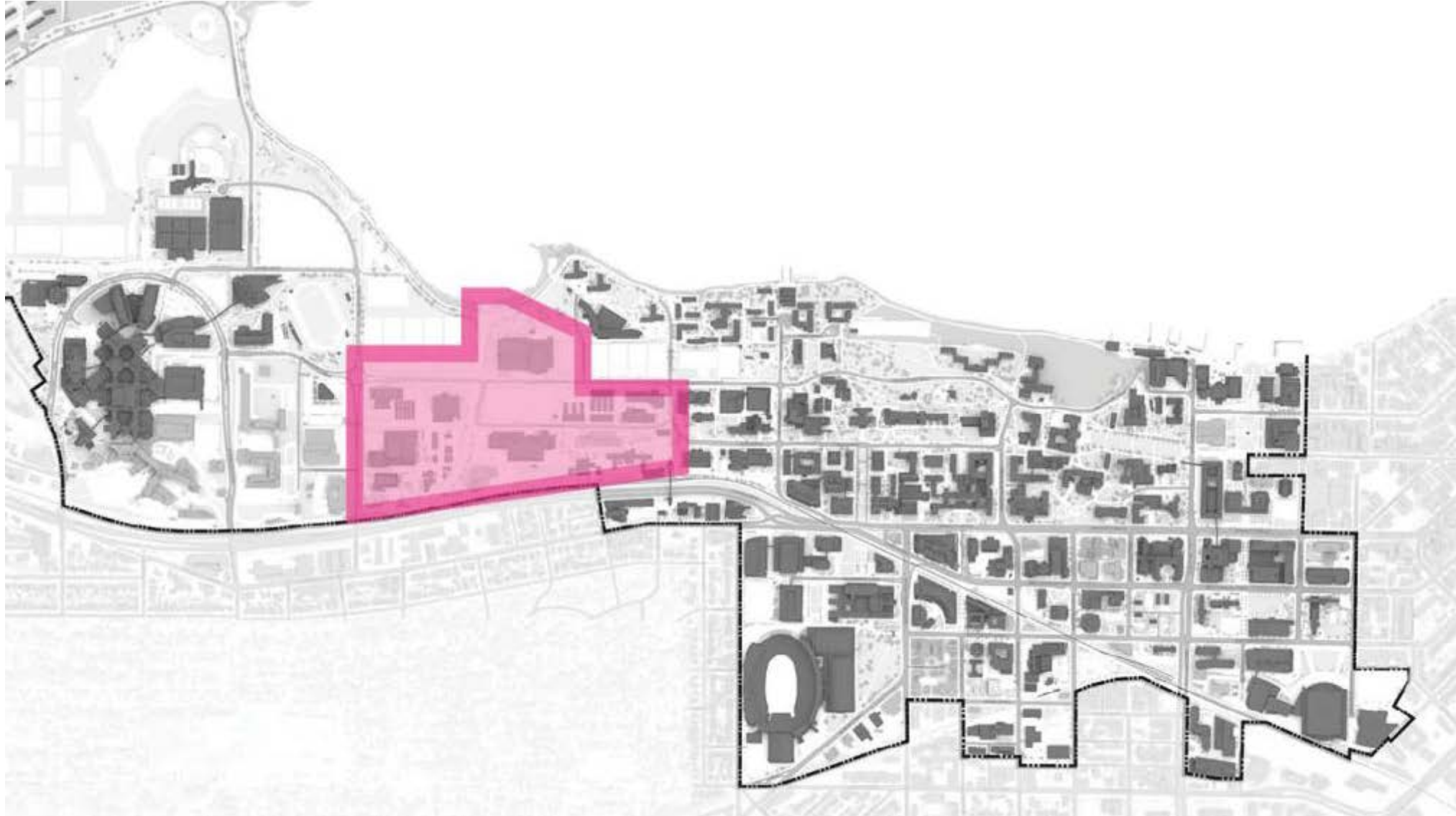
Protected combined cycle track, Vancouver



LINDEN DRIVE/WILLOW CREEK



LINDEN DRIVE/WILLOW CREEK



LINDEN DRIVE/WILLOW CREEK

Drivers and Opportunities

- Enhance Willow Creek and provide more stormwater treatment areas
- Resolve circulation issues on Linden Drive
- Explore a second vehicular bridge across creek at Linden
- Organize open space
- Improve bicycle connectivity



LINDEN DRIVE/WILLOW CREEK



Concept 1: Pedestrian Mall

- "Green District" – stormwater facilities
- Ag Commons open space at Horse Barn
- Kayak / canoe livery adjacent Natatorium or at Willows Beach



Concept 2: West Commons Open Space

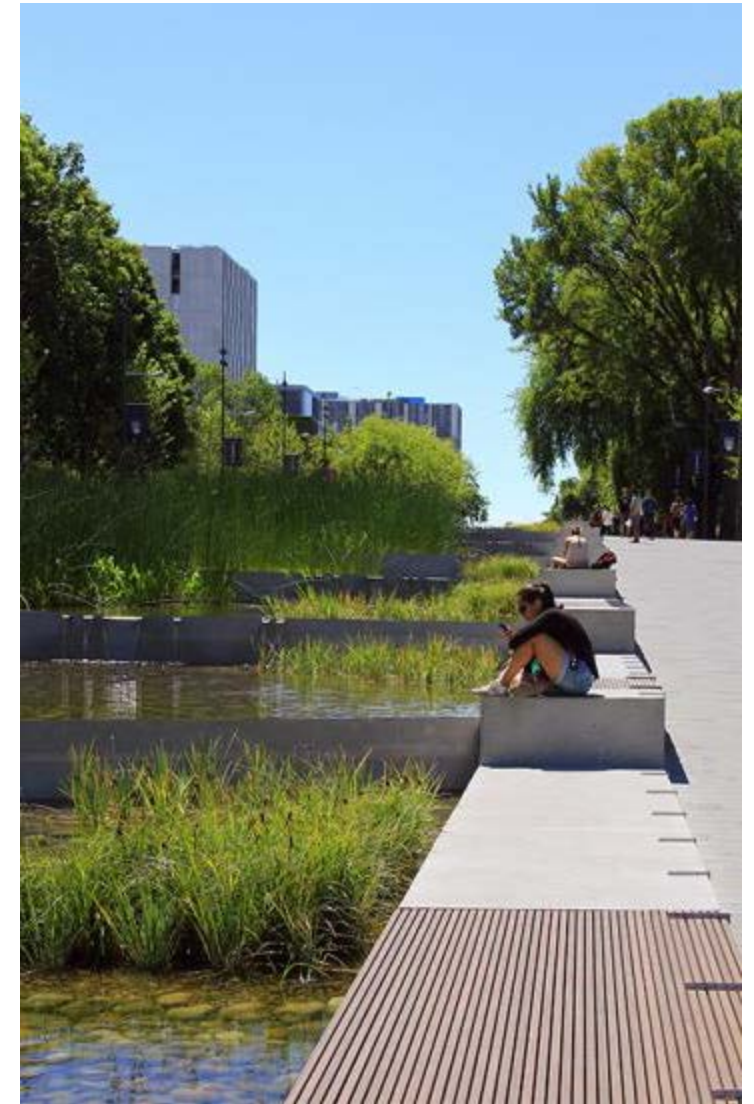
- Partial closure of Linden Drive
- Ag Commons at Horse Barn and east of Vet Med
- Steps and seating engage Willow Creek edge

LINDEN DRIVE & WILLOW CREEK

Benchmarking: Linden Drive Stormwater Features



Stormwater terraces, University of British Columbia, PSF Studio



LINDEN DRIVE & WILLOW CREEK

Benchmarking: Willow Creek Boardwalks



South Pond, Chicago, Studio Gang Architects



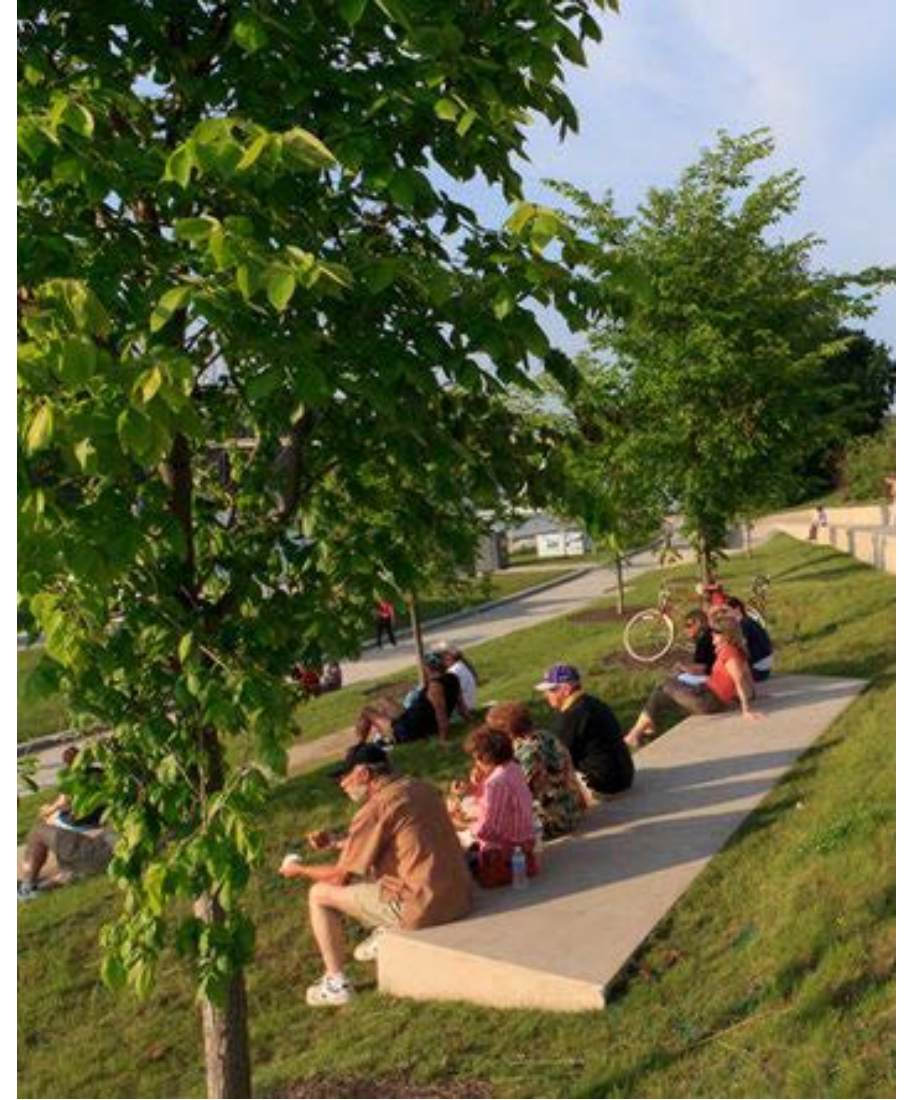
Umeå University, Sweden, Thorbjörn Andersson/SWECO

LINDEN DRIVE & WILLOW CREEK

Benchmarking: Willow Creek Activated Edge



Tanner Springs Park, Portland, Dreisetl Studio



Wilkes-Barre River Commons, Sasaki Associates



WEST CAMPUS



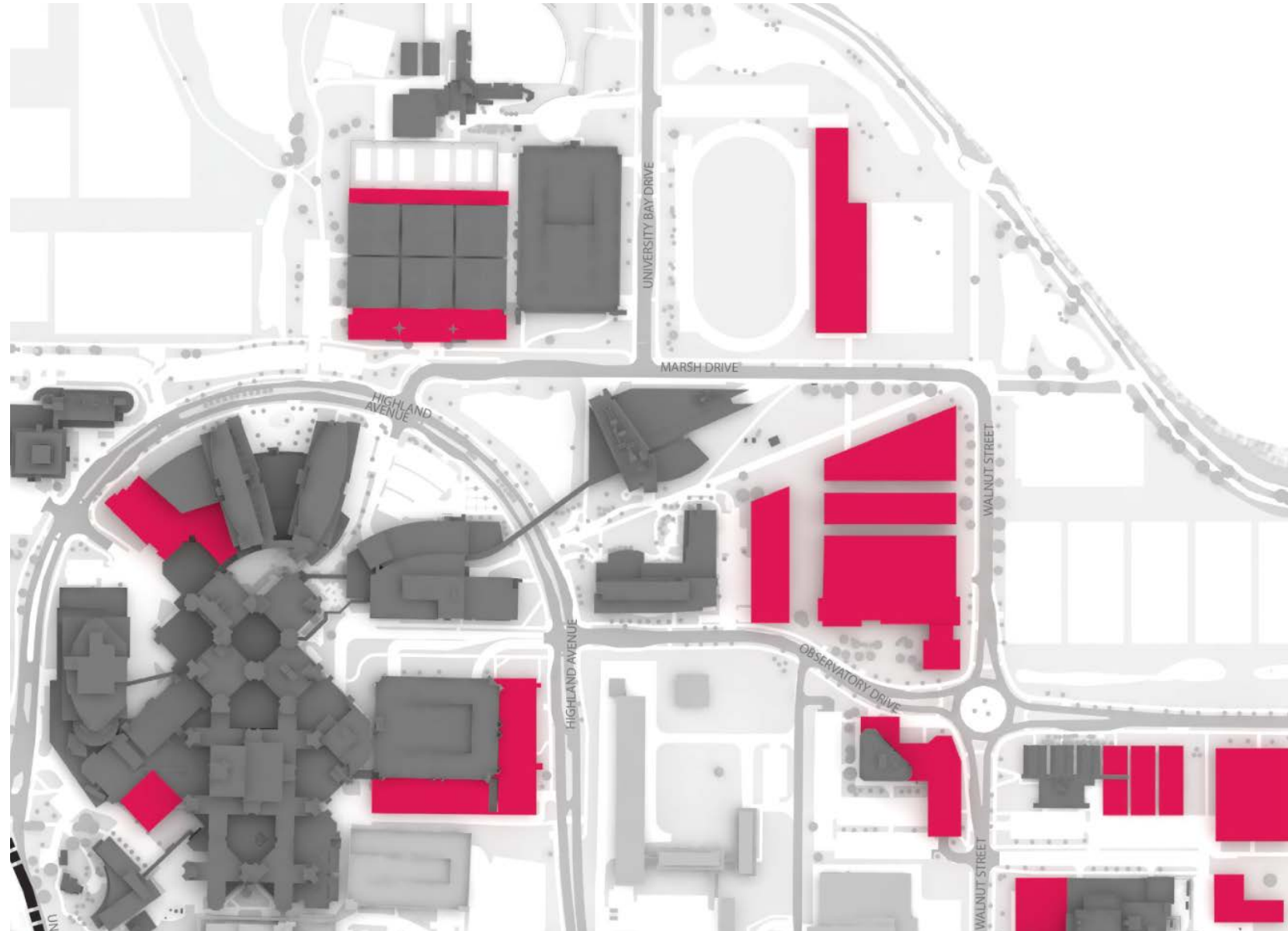
WEST CAMPUS



WEST CAMPUS

Drivers and Opportunities

- Increase in density and activity as the health sciences continue to move from the Central Campus to the West Campus



WEST CAMPUS - CONCEPT 1: LAKEVIEW GATHERING

- Separate track and soccer complexes
- Social space separated from lake by wetland
- Pedestrian mall network



WEST CAMPUS - CONCEPT 2: LAKEFRONT GATHERING

- Combined track and soccer complex
- Social space on the lake – lake edge modification, wetland reconfiguration
- Vehicle circulation has more resiliency





2. NEXT STEPS

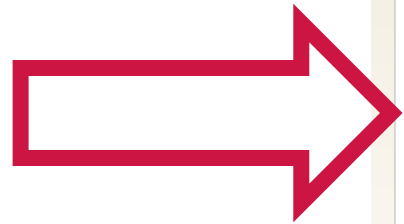
NEXT STEPS

Review alternatives through early December 2015

- Review and comment

Draft Preliminary Master Plan
February 2016

www.masterplan.wisc.edu





UNIVERSITY OF WISCONSIN - MADISON

2015 Campus Master Plan Update

- Home
- About
- Current Information
- Community Engagement
- 2015 Campus Master Plan
- Historic Campus Plans
- FAQ's





Engage Now!

Your voice is important and we want to hear from you! Join the campus community on our "Engage UW-Madison" interactive website and provide feedback to questions and see what others are thinking!

No Sign-in required



2015 UW-Madison Campus Master Plan Update
masterplan.wisc.edu
Open House #3

Public Open House #3
October 27, 2015 7-9PM
Health Sciences Learning Center (HSLC) Rm 1325
750 Highland Avenue

Draft Alternatives Presentation

UW-Madison Facilities Planning & Management
100 State Street, 4th Floor, 53706-1393
608.263.3000 masterplan.wisc.edu

Welcome to the website of the 2015 Campus Master Plan Update for the University of Wisconsin-Madison.

Here you will find important information related to the process and how you can make your voice and ideas heard. This site will be continually updated throughout the process and is designed to answer questions about the Campus Master Plan Update and encourage community and campus participation through its two-year development.

The need for a Campus Master Plan is rooted in

IMPORTANT NEWS & DATES

Open House press release - 9/11/15

Inside UW news article - 4/14/15

Inside UW news article - 11/04/14

UW Strategic Framework 2015-2019

Open House #3 - October 27, 2015
Health Sciences Learning Center (HSLC)
750 Highland Avenue
Rm 1325 7:00-9:00 p.m.
[Parking Information](#)
[Alternatives Presentation](#)

Master Plan Meetings:
Public Open House Meetings
On the 'Community Engagement' page

Committee Meeting Minutes
On the 'Current Information' page

Interactive Website Comments

NEXT STEPS

Interactive Website

- Provide input & comments
- Sign-up for updates and future meeting notices

**UW-Madison**
2015 Campus Master Plan Update

Search

Home Events Participate Contact Us



How well do you feel you understand the 12,000 year history of campus? «

About this Interactive Site

Your voice is important and we want to hear from you! Join our campus community and provide feedback to posted questions and plans...also ask us your own questions or just sign-up for the monthly newsletter and project updates.

This site is your online hub for discussions related to the 2015 UW-Madison Campus Master Plan. There is a robust tradition of shared decision making and transparency here at UW that is deeply rooted in the 2015 Campus Master Plan process. We believe there is a community of passionate problem solvers out there just waiting to use their insights, expertise and ideas. Whether you are a current student, past alum, neighbor, faculty, staff, city resident or just plain interested in the UW, this is the place for you to interact!

Status Report: October 2015

The master planning team has completed a thorough analysis of our campus open spaces, transportation system, green infrastructure, and utilities, and paired it with an analysis of the redevelopment opportunities described in the 2005 Campus Master Plan. The master planning team is now brainstorming the most significant issues and different approaches to address current and forecasted issues and opportunities.

Past Presentations, Meeting Notes & Newsletters

The following materials can be viewed on the 'Current Information' tab of the 2015 Campus Master Plan Update website located [here](#).

Timeline

-  **Public Open House #3: Draft Alternatives**
🕒 10/27/2015 - 5:00pm to 7:00pm
-  **Consultant Campus Visit #5**
🕒 12/09/2015 - 7:00am to 3:00pm
-  **Public Open House #4: Draft Preliminary Master**
🕒 02/24/2016 - 7:00pm to 9:00pm
-  **Public Open House #5: Revised Preliminary**
🕒 04/13/2016 - 7:00pm to 9:00pm

NEXT PUBLIC MEETING


Open House #4

February 24, 2016

7:00-9:00PM

Gordon Dining & Event Center
770 W. Dayton Street

Draft Preliminary Master Plan



14F1G 2015_OH4


2015 UW-Madison Campus Master Plan Update

masterplan.wisc.edu
Open House #4

Photography: Jeff Miller

Public Open House #4
February 24, 2016 7-9PM
Gordon Dining and Event Center Rm. Sonata
770 W. Dayton Street

**Draft Preliminary
Master Plan Presentation**



UW-Madison Facilities Planning & Management
9th Floor WARF Building 610 Walnut Street
608-263-3000 www.fpm.wisc.edu