

Environment, Health & Safety Facilities Planning & Management UNIVERSITY OF WISCONSIN-MADISON

Paul Umbeck
Director

FACILITY MANAGERS MEETING

April 30, 2015

Agenda

- ⦿ Fire & Life Safety
 - Fire Extinguisher Training
 - Tornado Season
 - AED Reminder
- ⦿ Chemical Safety
 - Compressed Gas Cylinders
 - Carboys - Solvent Containers
 - Dry Ice Safety (Poster)

Fire & Life Safety Updates

Fire Extinguisher Training

Home | Environment, Health & Safety | University of Wisconsin-Madison - Windows Internet Explorer provided by UW-Madison AIMS

http://www.ehs.wisc.edu/

File Edit View Favorites Tools Help

Convert Select

Best Places to Work in the F... Suggested Sites Capital Planning and Devel... Environment, Health and Sa... Facilities, Planning, & Manag... FP&M Financial Services Lakeshore Nature Preserve ... Purchasing Services Univer...

UNIVERSITY OF WISCONSIN-MADISON

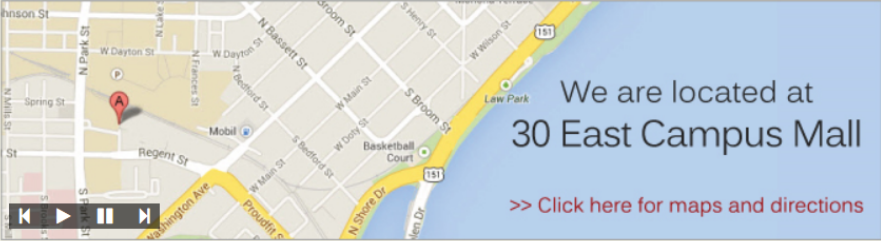
UW Search | My UW | Map | Calendar

Environment, Health & Safety
Division of Facilities Planning & Management

Search this site: Go!

Powered by Google Translate Select Language

HOME ABOUT EH&S PROGRAMS LAB & RESEARCH FACILITIES LAKE CONTACT






 We are located at
30 East Campus Mall
>> Click here for maps and directions

About EH&S
Safety is a daily practice at UW-Madison. EH&S envisions a campus where safety awareness and compliance are integrated into everyday operations, making this University a model for safe research and education.
>> [Learn More](#)

POPULAR SEARCHES

Services	Guidance/Policy	External Links
Abatement/Asbestos	Animal Contact	Animal Risk Questionnaire
Biosafety Cabinet Certification	Research Bloodborne Pathogens	HP Assist Login
Bio Protocol-ARROW	Chemical Hygiene Plan	Pathogen Safety Data Sheets
CORD	Combustible Storage	Select Agent Login
Dosimetry	DEA Controlled Substances	
Fire Extinguishers	Facility Exit & Evacuation	
Lab Remodeling Assessment	Hazard Communication	
Lab Inspections/Outreach	Hazmat Shipping	

QUICK LINKS

-  **Emergencies**
Protocol & contact info for emergency situations
-  **Training**
Descriptions & schedules for our training courses
-  **Disposal Services**
Disposal of chemicals, animal tissue & sharps
-  **Forms/Manuals/Signs**
Pull any form, manual or sign from our database
-  **Contact List**
Look here for staff member contact information

NEWS

Chemical Safety Training Course Now Offered at Multiple Locations
Our Chemical Safety Training course is now offered at more locations on campus, including Memorial Union and Union South. Click [here](#) to register!

Changes to BSC Billing Process



UNIVERSITY OF WISCONSIN-MADISON

UW Search | My UW | Map | Calendar

Environment, Health & Safety

Division of Facilities Planning & Management

Search this site: Go!

Powered by Google Translate Select Language

HOME ABOUT EH&S PROGRAMS LAB & RESEARCH FACILITIES LAKE CONTACT

EH&S Training

[Training Overview](#)

[Animal Safety Training](#)

[Biosafety Training](#)

[Chem Safety Training](#)

[Fire Safety Training](#)

[General & Building
Safety Training](#)

[Radiation Safety
Training](#)



EH&S Training Overview

EH&S offers several different types of training for each of our service areas. These include onsite training through OHRD, online training through Learn@UW, video tutorials and written instruction manuals. Please look below for a calendar of our upcoming training sessions:

Find training by title:

Select a Training Course

Find Training by category:

- [Animal Safety Training](#)
- [Biosafety Training](#)
- [Chemical Safety Training](#)
- [Fire Safety Training](#)
- [General & Building Safety Training](#)
- [Radiation Safety Training](#)

Training FAQ

Below is a list of our most frequently asked training questions. If the answer to your question does not appear in this list, please contact the training coordinator for your course. To find the training coordinator, click on the desired training (Biosafety, Chemical Safety, etc.) on the left and locate the "Contact" tab.

I Don't Know How to Sign Up for My Course. What Should I Do?

Every course description has a section titled "Format". This is where we describe how your training is





UNIVERSITY OF WISCONSIN-MADISON

UW Search | My UW | Map | Calendar

Environment, Health & Safety

Division of Facilities Planning & Management

Search this site: Go!

Powered by Google Translate Select Language

HOME ABOUT EH&S PROGRAMS LAB & RESEARCH FACILITIES LAKE CONTACT

EH&S Training

[Training Overview](#)

[Animal Safety Training](#)

[Biosafety Training](#)

[Chem Safety Training](#)

[Fire Safety Training](#)

[General & Building
Safety Training](#)

[Radiation Safety
Training](#)



Fire Safety Training

Courses Offered

[Learn@UW Help](#)

[Contact](#)

Training

While various national, state and local ordinances require portable fire extinguishers to be placed in accessible areas of all occupied commercial buildings, the actual use of one is foreign to most people. The most common item stressed to all individuals is to leave a building upon hearing and seeing the fire alarm. While this is important, fire extinguishers can be used on incipient stage fires if the user has been trained. The code covering this comes from the Title 29 of the Code of Federal Regulations Part 1910 Subpart G. 1910.157(g). For more information, visit [OSHA Fire Extinguisher Training Requirements](#) page.

► [Fire Extinguisher Training](#)

► [Fire Extinguisher Refresher Training](#)

Environment, Health & Safety, 30 East Campus Mall, Madison, WI 53715-1227 | 608-265-5000 | Fax: 608-262-6767

Feedback, questions or accessibility issues: ehs@fpm.wisc.edu

Division of Facilities Planning & Management

©2015 Board of Regents of the University of Wisconsin System



Environment, Health & Safety
Division of Facilities Planning & Management

Fire Safety Training | Environment, Health & Safety | University of Wisconsin-Madison - Windows Internet Explorer provided by U

http://www.ehs.wisc.edu/firesafetytraining.htm

File Edit View Favorites Tools Help

Convert Select

Best Places to Work in the F... Suggested Sites Capital Planning and Develo... Environment, Health and Sa... Facilities, Planning, & Manag... FP&M Financial Services Lakeshore Nature Preserve ... Purchasing Services Univer...

General & Building Safety Training

Radiation Safety Training

+

hearing and seeing the fire alarm. While this is important, fire extinguishers can be used on incipient stage fires if the user has been trained. The code covering this comes from the Title 29 of the Code of Federal Regulations Part 1910 Subpart G. 1910.157(g). For more information, visit [OSHA Fire Extinguisher Training Requirements](#) page.

Fire Extinguisher Training

Fire Extinguisher Training

This in-person training will cover the proper operation of fire extinguishers.

Format: In-person; register online through OHRD. Or, contact [Joe Hertel](#) or [Don Siebert](#) to set up a training for your department.

Prerequisite: None

Renewal: Yearly [Refresher Training](#)

Schedule:

April 23rd, 2:00pm – 3:00pm; Birge Hall [register now](#)

May 12th, 9:30am – 10:30am; Engineering Hall [register now](#)

May 18th, 12:00pm – 1:00pm; 650 Babcock Drive (Jorns Hall Area) [register now](#)

May 21st, 1:30pm – 2:30pm; Engineering Mall [register now](#)

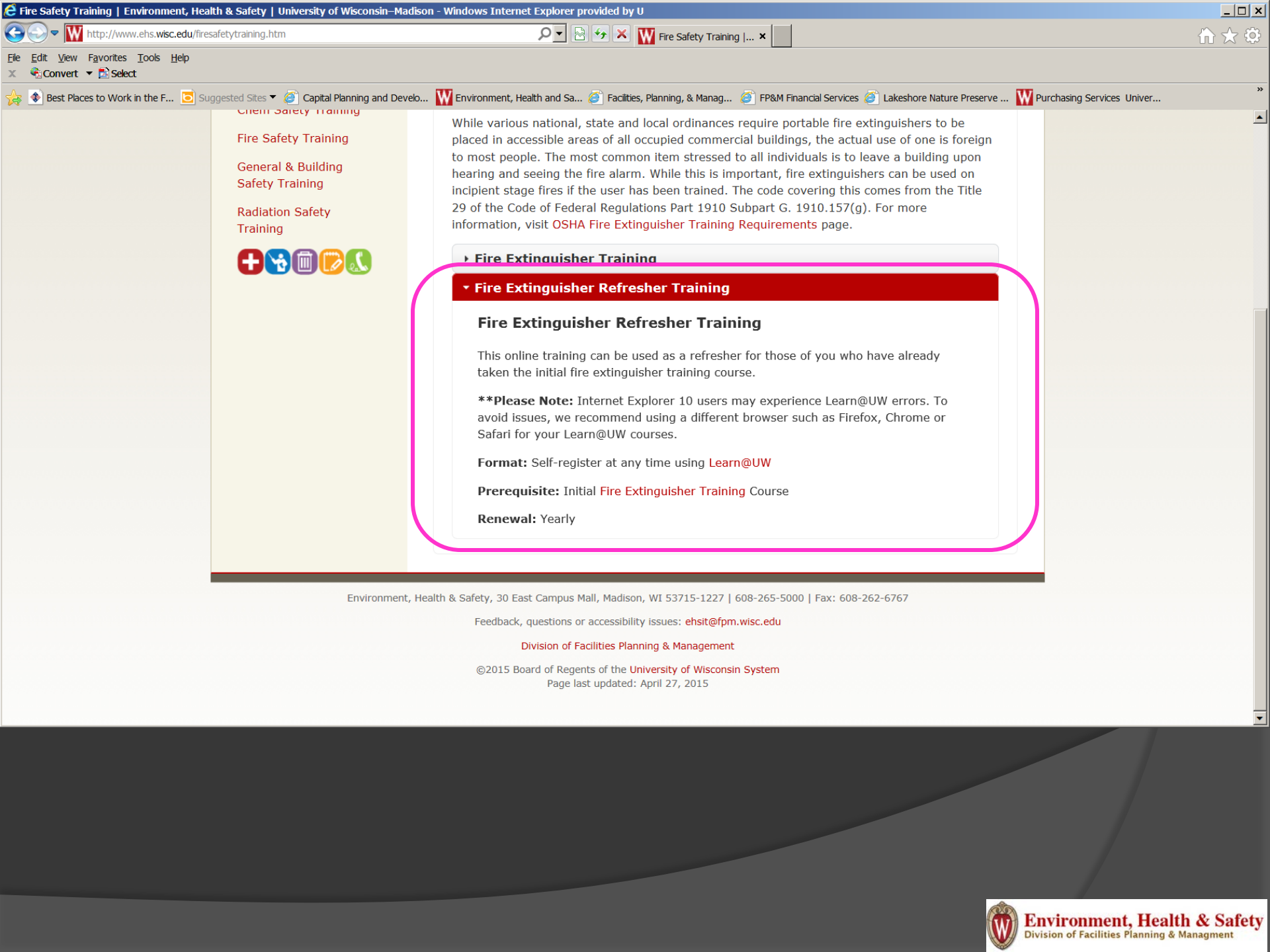
June 18th, 1:30pm – 2:30pm; Engineering Mall [register now](#)

July 16th, 1:30pm – 2:30pm; Engineering Mall [register now](#)

August 20th, 1:30pm – 2:30pm; Engineering Mall [register now](#)

Fire Extinguisher Refresher Training

Environment, Health & Safety, 30 East Campus Mall, Madison, WI 53715-1227 | 608-265-5000 | Fax: 608-262-6767



Fire Safety Training

Fire Safety Training

General & Building Safety Training

Radiation Safety Training



While various national, state and local ordinances require portable fire extinguishers to be placed in accessible areas of all occupied commercial buildings, the actual use of one is foreign to most people. The most common item stressed to all individuals is to leave a building upon hearing and seeing the fire alarm. While this is important, fire extinguishers can be used on incipient stage fires if the user has been trained. The code covering this comes from the Title 29 of the Code of Federal Regulations Part 1910 Subpart G, 1910.157(g). For more information, visit [OSHA Fire Extinguisher Training Requirements](#) page.

Fire Extinguisher Training

Fire Extinguisher Refresher Training

Fire Extinguisher Refresher Training

This online training can be used as a refresher for those of you who have already taken the initial fire extinguisher training course.

****Please Note:** Internet Explorer 10 users may experience Learn@UW errors. To avoid issues, we recommend using a different browser such as Firefox, Chrome or Safari for your Learn@UW courses.

Format: Self-register at any time using [Learn@UW](#)

Prerequisite: Initial [Fire Extinguisher Training](#) Course

Renewal: Yearly

Environment, Health & Safety, 30 East Campus Mall, Madison, WI 53715-1227 | 608-265-5000 | Fax: 608-262-6767

Feedback, questions or accessibility issues: ehsit@fpm.wisc.edu

Division of Facilities Planning & Management

©2015 Board of Regents of the University of Wisconsin System

Page last updated: April 27, 2015

Tornado Season - Did You Know

- Wisconsin's Tornado & Severe Weather Awareness Week was April 13-17, 2015
- Wisconsin averages 23 tornadoes annually
- In 2014, 22 tornadoes were reported in Wisconsin by the National Weather Service. Eighteen of those tornadoes occurred in June.
- Strongest tornado in 2014 occurred on June 17 when an EF 3 tornado hit Verona. At least 30 homes were damaged as well as the Country View Elementary School. The tornado traveled about a mile, had wind speeds of 136 to 165 mph and was on the ground for several minutes.



Free Information can be found at <http://readywisconsin.wi.gov/>

Ready Wisconsin - Windows Internet Explorer provided by UW-Madison AIMS

http://readywisconsin.wi.gov/

Ready Wisconsin

File Edit View Favorites Tools Help

Convert Select

Best Places to Work in the F... Suggested Sites Capital Planning and Devel... Environment, Health and Sa... Facilities, Planning, & Manag... FP&M Financial Services Lakeshore Nature Preserve ... Purchasing Services Univer...

Home | Contact Us | Site Map Google Custom Search Search

READY WISCONSIN

ReadyWisconsin is a part of the Wisconsin Emergency Management team

Home About ReadyWI Get A Kit Make A Plan Be Informed ReadyResources STEP Cell Phone Alerts Cyber

Connect with Us

Join us on Facebook

Follow us on Twitter

Watch us on YouTube

View us on Flickr

Sign up for E-mails

Tweets Follow

Vince Condella @VinceCondella1 5h
On this date 31 yrs ago, Wales tornado kills 1, injures 14. Write-up from @NWSMKX here: weather.gov/mkx/042784_wal... #swiwx pic.twitter.com/OKA83ki5Pp

TORNADO SURVIVOR STORIES!
Wisconsin Residents Share Their Experiences

Tornado Awareness Week

STEP Student Tools for Emergency Planning

Midwest Road Conditions

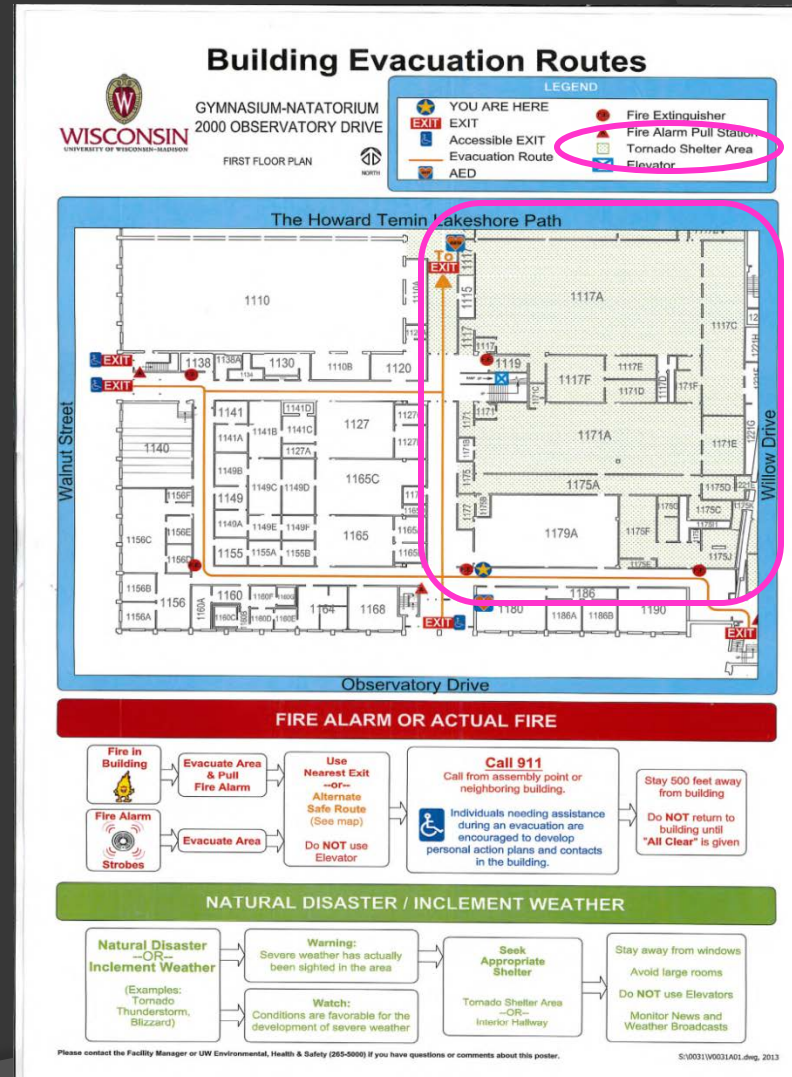
ReadyWisconsin Headlines

- [Preparing Your Pets for Emergencies Makes Sense](#)
- [DHS Announces The 2015 CYBER Student](#)

Get a NOAA

On The UW-Madison Campus

- Shelter locations can be found within Building Evacuation Route maps



AED Reminder

- If your building is interested in purchasing an AED, please let Fire & Life Safety know so we can add the unit(s) into our inspection cycle.

Administrative Policy

JW-Madison Campus-Wide Administrative Policy Policy # 2013_12_01_v1 Public Access Automated External Defibrillators (AED) Policy	Effective Date:	December 1, 2013
	Last Updated:	December 1, 2013
	Last Reviewed	December 1, 2013
	Next Review:	December 1, 2015

Functional Owner	Facilities Planning & Management/ Department of Environment, Health & Safety
Executive Sponsor	Associate Vice Chancellor, William M. Elvey, PE, FMP
Policy Contact	Director, Paul Umbeck, PhD, pumbeck@fpm.wisc.edu

Policy Summary

The purchase, placement, use and maintenance of AEDs at the University of Wisconsin-Madison shall conform to the requirements established in this policy. No work unit is permitted to purchase or install a public access AED without approval by the process established herein.



<http://www.ehs.wisc.edu/fire/CampusAEDPolicy.pdf>

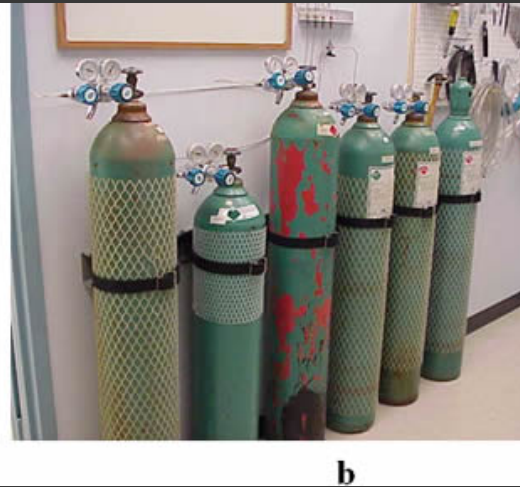
Chemical Safety Updates



Compressed Gas Cylinders



Compressed gas cylinders must be chained or strapped at all times.



Compressed Gas
Cylinder storages areas
must be marked with full
and Empty Storage areas.

**EMPTY
CYLINDER**

 **FULL
CYLINDER
STORAGE
AREA**



Gas Cylinder Caps & Movement



- When moving a compressed gas cylinder use a Cylinder Hand Truck
- Cylinders must be secured to the Hand Truck when in transit



Carboys – Solvent Containers

Not These Carboys





- Carboys must be capped and tightened when not being filled.
- Funnels are not considered a cap.
- Carboys should not be used to prop doors open or stored in hallways.

Carboys in Buildings

- Full carboys can be picked up and swapped for an empty weekly.
- All carboy pickup requests are processed online through the EH&S website. Click on the trash can icon.

The screenshot shows the University of Wisconsin-Madison Environment, Health & Safety website. The header includes the university logo, navigation links (HOME, ABOUT, EH&S PROGRAMS, LAB & RESEARCH, FACILITIES, LAKE, CONTACT), and a search bar. A map shows the location at 30 East Campus Mall. The 'QUICK LINKS' section on the right contains several links, with 'Disposal Services' (represented by a trash can icon) circled in red. Below this, there are sections for 'About EH&S', 'POPULAR SEARCHES' (listing Services, Guidance/Policy, and External Links), and 'NEWS'.

UNIVERSITY OF WISCONSIN-MADISON
Environment, Health & Safety
Division of Facilities Planning & Management

Search this site: Go!

HOME ABOUT EH&S PROGRAMS LAB & RESEARCH FACILITIES LAKE CONTACT

We are located at 30 East Campus Mall
>> Click here for maps and directions

QUICK LINKS

- Emergencies**
Protocol & contact info for emergency situations
- Training**
Description & schedules for our training courses
- Disposal Services**
Disposal of chemicals, animal tissue & sharps
- Forms/Manuals/Signs**
Pull any form, manual or sign from our database
- Contact List**
Look here for staff member contact information

ABOUT EH&S
Safety is a daily practice at UW-Madison. EH&S envisions a campus where safety awareness and compliance are integrated into everyday operations, making this University a model for safe research and education.
>> Learn More

POPULAR SEARCHES

Services	Guidance/Policy	External Links
Abatement/Asbestos	Animal Contact	Animal Risk Questionnaire
Biosafety Cabinet Certification	Research Bloodborne Pathogens	HP Assist Login
Bio Protocol-ARROW	Chemical Hygiene Plan	Pathogen Safety Data Sheets
CORD	Combustible Storage	Select Agent Login
Decommissioning	DEA Controlled Substances	

NEWS

Chemical Safety Training Course Now Offered at Multiple Locations
Our Chemical Safety Training course is now offered at more locations on campus, including:

Dry Ice Safety

- ◉ Dry Ice sublimates to gas (Carbon Dioxide)
- ◉ Can cause asphyxiation
- ◉ Incident during transportation caused auto accident



Dry Ice Poster

- Poster is available from EH&S Chem Safety
- Request one for all dry ice storage locations

DRY ICE SAFETY

Hazards of Dry Ice

Dry ice is solid Carbon Dioxide (CO_2) and is extremely cold

As dry ice heats up it sublimates into an asphyxiant gas

A small amount of dry ice can sublime into a large volume a gas

Dry ice can be hazardous when used/stored in a confined space or when used to make "smoke drinks" (consumed)

In well ventilated areas, CO_2 gas dissipates and is harmless. However, in confined or poorly ventilated spaces, CO_2 gas can accumulate

Risks of CO_2 exposure include: dizziness, loss of consciousness, and suffocation

Effects of CO_2 Exposure (By Volume)

1%	Visual Distorted Sight	Central Nervous System
3%	Auditory Reduced Hearing	Mild Narcosis
5%		Dizziness
8%		Confusion
		Headache
		Skin Sweating
		Heart Increased Heart Rate and Blood
		Muscular Tremors
		Respiratory Shortness of Breath

How to Handle Dry Ice

- Wear thermal gloves when handling dry ice
- Store in a well-ventilated space
- Do not consume dry ice
- Secure dry ice to prevent unauthorized access
- Do not store in tightly sealed containers
- Avoid leaning into or over any storage container storing dry ice

Transporting Dry Ice

You should avoid transporting dry ice in the cab of a truck or passenger compartment of a car when possible

If you must transport dry ice in the driver's compartment, ensure the compartment is well-ventilated (windows open)

Make sure the container holding the dry ice is closed securely to minimize the release of gas

Transporting dry ice in an insulated cooler will minimize off-gassing

Load and unload dry ice in a well-ventilated area

Environment, Health and Safety Department
UNIVERSITY OF WISCONSIN-MADISON
(608) 265-6500

