

# Linden Drive Parking Garage

## University of Wisconsin – Madison

UW Madison Campus  
Project No. 1711F

# NEW GARAGE @ LINDEN DRIVE

- Located between Observatory and Linden Drives at Lot 62.
- The five-story pre-cast concrete structure will house 600+ parking stalls, 14 motorcycle, 51 bicycle stalls and a small maintenance office and storage room for UW Transportation Services.
- Materials work with the surrounding West Campus Academic Buildings.
- Re-route the existing steam utility running along Linden Drive.

Construction Total	\$23,647,000
Contingency Total	\$ 1,920,000
<b>TOTAL ESTIMATED PROJECT COST</b>	<b>\$23,647,000</b>





UW Campus Master Plan – Near West Campus Neighborhood



Observatory Drive

Vet. Med Addition

Parking  
Garage

Meat Science

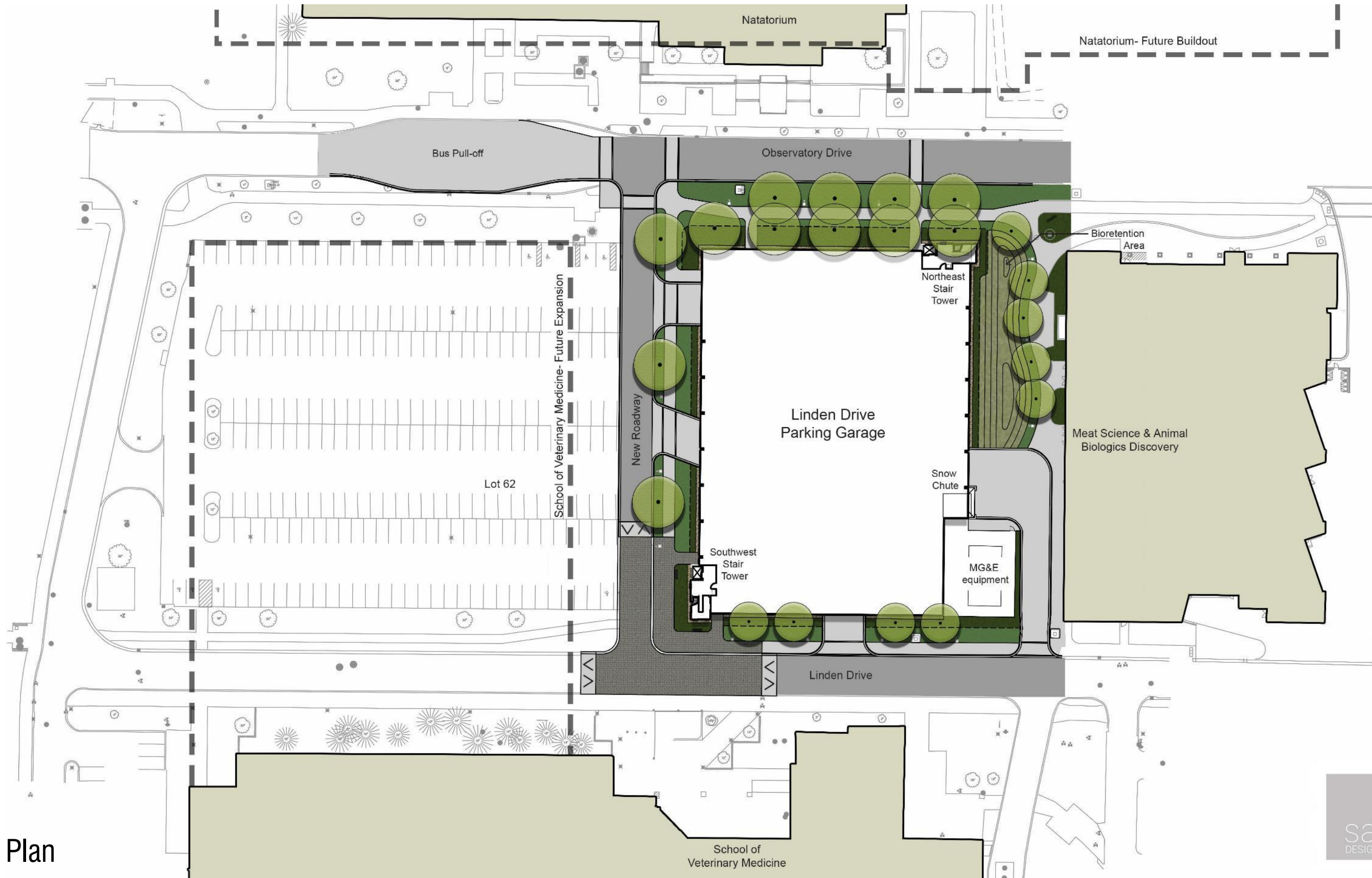
Linden Drive

School of Veterinary Medicine

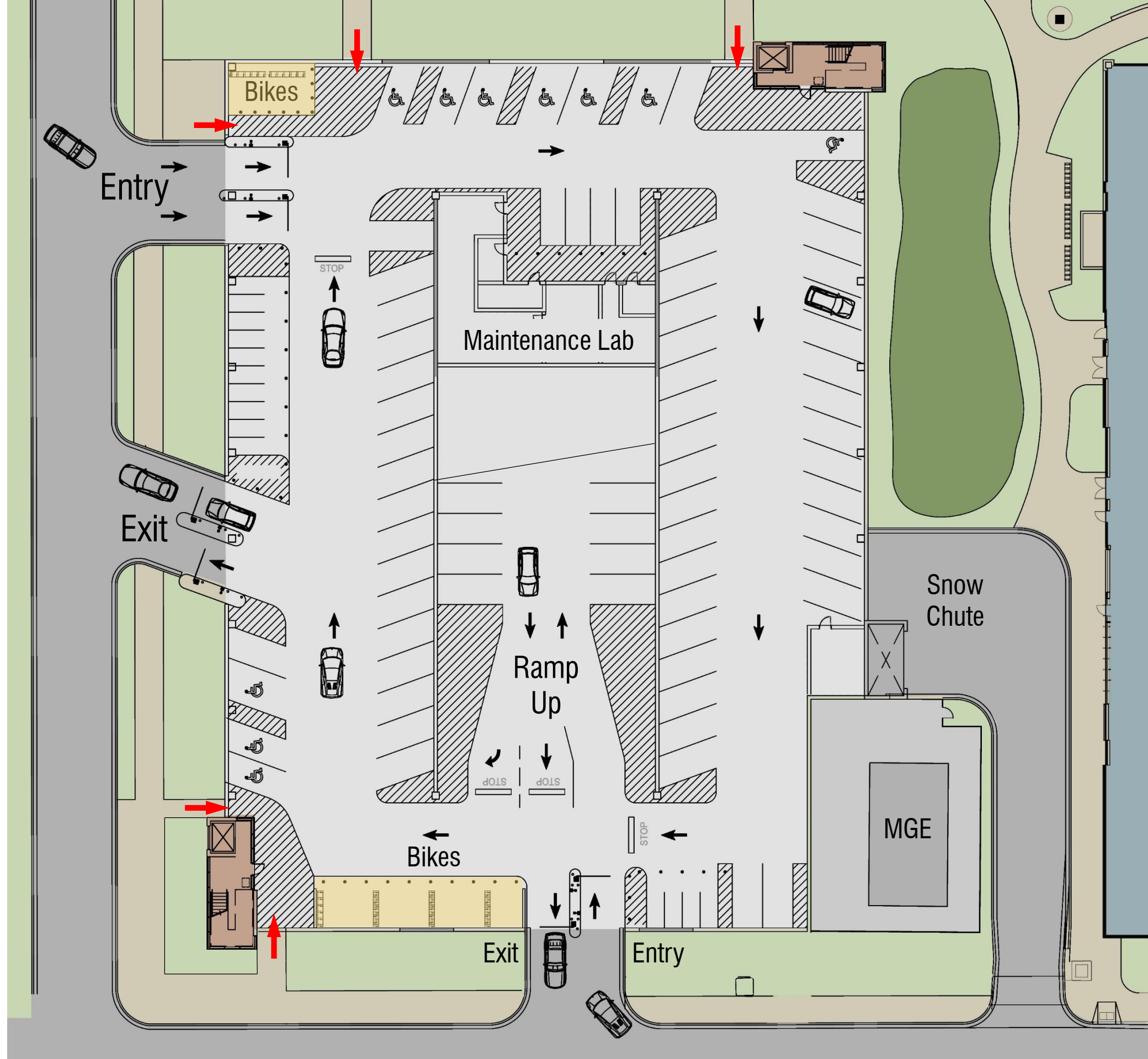
Site with future SVM Addition



Site Plan



First Floor Plan



LEVEL	8'-6" WIDE SPACES	ACCESSIBLE SPACES	TOTAL PARKING SPACES
P5	104	0	104
P4	137	0	137
P3	137	0	137
P2	134	3	137
P1	84	10	94
TOTAL	596	13	609

NOTES:  
1. LEVEL P1 INCLUDES (4) SPACES DESIGNATED FOR UW AND (4) EV SPACES.





NW perspective along Observatory Drive





NE perspective along Observatory Drive





SE perspective along Linden Drive





SW perspective along Linden Drive





NW ground level perspective along Observatory Drive





NE ground level perspective along Observatory Drive





Brick



Precast Concrete

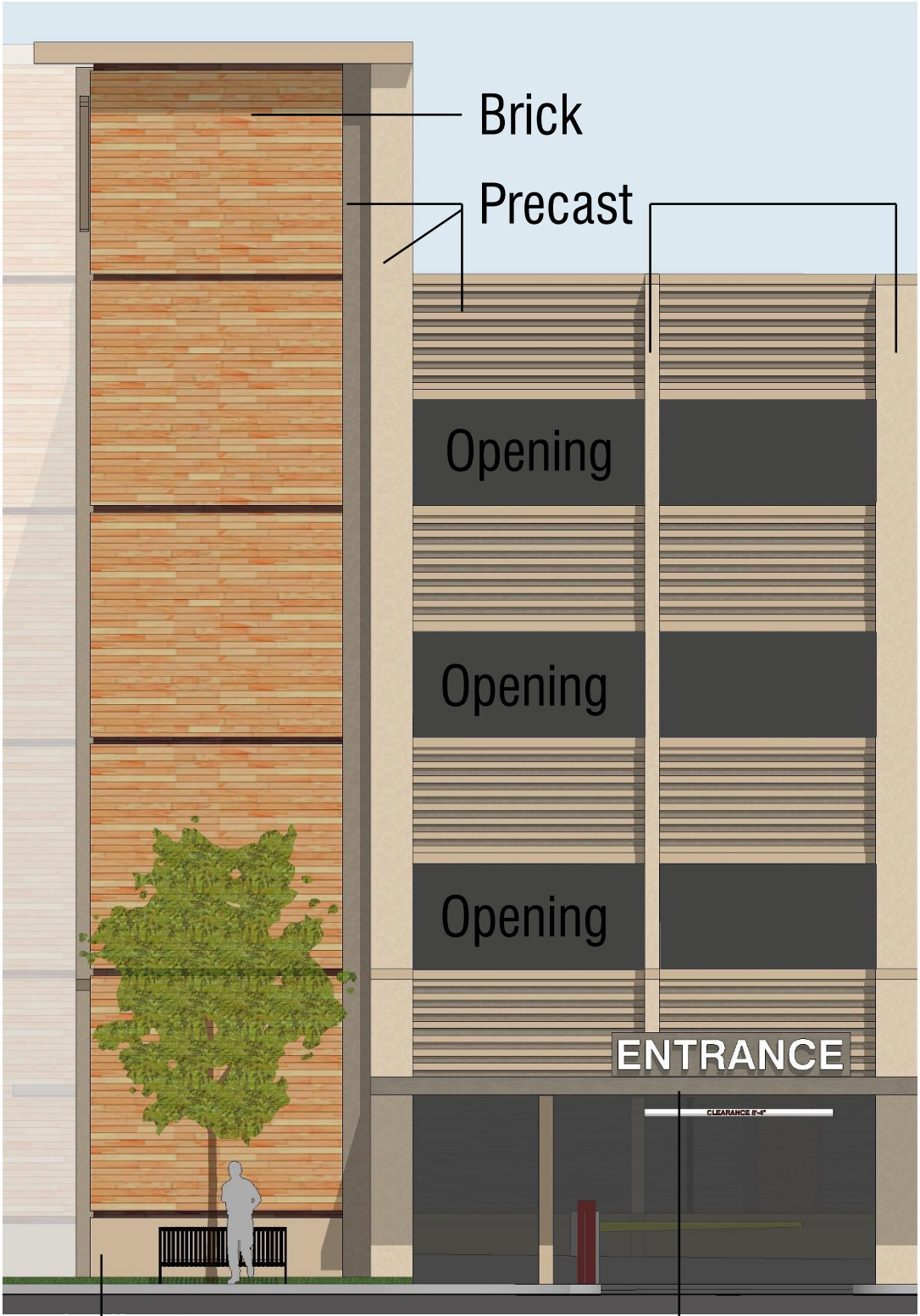


Stainless steel  
Hand & Guardrails  
Elevator Finishes



Champagne  
Curtainwall &  
Entry Canopies

Metals



Precast Metal Panel



PR Review	February 2019
UWSA Regents Approval	April 4, 2019
SBC Approval	April 2019
Final Review:	April 19, 2019
Bid Documents:	May 31, 2019
MEP Bid Opening:	July 16, 2019
GPC Bid Opening:	July 30, 2019
Start of Construction:	September 2019
Substantial Completion:	December 2020
Occupancy:	January 2021
Site Substantial Completion:	May 2021